

Acta Crystallographica Section E

Structure Reports

Online

ISSN 1600-5368

(E)-1-(2,5-Dimethyl-3-thienyl)-3-(2-hydroxyphenyl)prop-2-en-1-oneAbdullah M. Asiri,^{a,b} Salman A. Khan^b and M. Nawaz Tahir^{c*}

^aThe Center of Excellence for Advanced Materials Research, King Abdul Aziz University, Jeddah 21589, PO Box 80203, Saudi Arabia, ^bDepartment of Chemistry, Faculty of Science, King Abdul Aziz University, Jeddah 21589, PO Box 80203, Saudi Arabia, and ^cDepartment of Physics, University of Sargodha, Sargodha, Pakistan
Correspondence e-mail: dmntahir_uos@yahoo.com

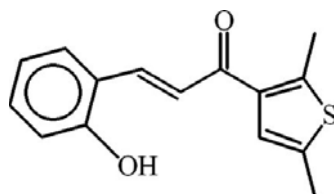
Received 4 August 2010; accepted 4 August 2010

Key indicators: single-crystal X-ray study; $T = 296$ K; mean $\sigma(C-C) = 0.002$ Å; R factor = 0.038; wR factor = 0.112; data-to-parameter ratio = 19.1.

In the title compound, $C_{15}H_{14}O_2S$, the dihedral angle between the aromatic rings is 8.46 (8)°. The central enone group is planar (r.m.s. deviation = 0.0267 Å) and is oriented at a dihedral angle of 1.20 (9)° with respect to the benzene ring and at 8.27 (9)° with respect to the thiophene group. In the crystal, the molecules are linked into polymeric chains extending along the b axis due to intermolecular $O-H\cdots O$ hydrogen bonding. An $S(6)$ ring motif is formed due to a short intramolecular $C-H\cdots O$ contact. $C-H\cdots\pi$ interactions involving a methyl group of the 2,5-dimethylthienyl group and the benzene ring are present. $\pi-\pi$ interactions between the centroids of the benzene and heterocyclic rings [3.7691 (9) Å] also occur.

Related literature

For background to chalcones and their biological activity, see: Bandgar & Gawande (2010); Domínguez *et al.* (2001); Hans *et al.* (2010); Kayser & Kiderlen (2001); Mojzis *et al.* (2008); Vogel *et al.* (2010). For related structures, see: Asiri *et al.* (2010a,b); For graph-set notation, see: Bernstein *et al.* (1995).



Experimental

Crystal data

$C_{15}H_{14}O_2S$
 $M_r = 258.32$

Triclinic, $P\bar{1}$
 $a = 7.6095$ (3) Å

$b = 7.7900$ (3) Å
 $c = 12.3109$ (7) Å
 $\alpha = 98.527$ (2)°
 $\beta = 91.943$ (2)°
 $\gamma = 115.551$ (1)°
 $V = 647.19$ (5) Å³

$Z = 2$
Mo $K\alpha$ radiation
 $\mu = 0.24$ mm⁻¹
 $T = 296$ K
 $0.30 \times 0.24 \times 0.22$ mm

Data collection

Bruker Kappa APEXII CCD diffractometer
Absorption correction: multi-scan (SADABS; Bruker, 2005)
 $T_{\min} = 0.968$, $T_{\max} = 0.985$

11156 measured reflections
3174 independent reflections
2720 reflections with $I > 2\sigma(I)$
 $R_{\text{int}} = 0.022$

Refinement

$R[F^2 > 2\sigma(F^2)] = 0.038$
 $wR(F^2) = 0.112$
 $S = 1.05$
3174 reflections

166 parameters
H-atom parameters constrained
 $\Delta\rho_{\text{max}} = 0.30$ e Å⁻³
 $\Delta\rho_{\text{min}} = -0.23$ e Å⁻³

Table 1

Hydrogen-bond geometry (Å, °).

Cg2 is the centroid of the C1–C6 benzene ring.

| $D-H\cdots A$ | $D-H$ | $H\cdots A$ | $D\cdots A$ | $D-H\cdots A$ |
|---------------------------|-------|-------------|-------------|---------------|
| $O1-H1\cdots O2^i$ | 0.82 | 1.8900 | 2.7067 (14) | 174 |
| $C8-H8\cdots O1$ | 0.93 | 2.2400 | 2.8416 (17) | 122 |
| $C15-H15A\cdots Cg2^{ii}$ | 0.96 | 2.79 | 3.652 (2) | 150 |

Symmetry codes: (i) $x, y - 1, z$; (ii) $-x + 2, -y + 2, -z$.

Data collection: APEX2 (Bruker, 2009); cell refinement: SAINT (Bruker, 2009); data reduction: SAINT; program(s) used to solve structure: SHELXS97 (Sheldrick, 2008); program(s) used to refine structure: SHELXL97 (Sheldrick, 2008); molecular graphics: ORTEP-3 for Windows (Farrugia, 1997) and PLATON (Spek, 2009); software used to prepare material for publication: WinGX (Farrugia, 1999) and PLATON.

The authors would like to thank the Chemistry Department, King Abdul Aziz University, Jeddah, Saudi Arabia, for providing the research facilities and for the financial support of this work *via* grant No. (3–045/430).

Supplementary data and figures for this paper are available from the IUCr electronic archives (Reference: BQ2228).

References

- Asiri, A. M., Khan, S. A. & Tahir, M. N. (2010a). *Acta Cryst.* **E66**, o2099.
Asiri, A. M., Khan, S. A. & Tahir, M. N. (2010b). *Acta Cryst.* **E66**, o2133.
Bandgar, B. P. & Gawande, S. S. (2010). *Bioorg. Med. Chem.* **18**, 2060–2065.
Bernstein, J., Davis, R. E., Shimon, L. & Chang, N.-L. (1995). *Angew. Chem. Int. Ed. Engl.* **34**, 1555–1573.
Bruker (2005). SADABS. Bruker AXS Inc., Madison, Wisconsin, USA.
Bruker (2009). APEX2 and SAINT. Bruker AXS Inc., Madison, Wisconsin, USA.
Domínguez, J. N., Charris, J. E., Lobo, G., de Domínguez, N. G., Moreno, M. M., Riggione, F., Sanchez, E., Olson, J. & Rosenthal, P. J. (2001). *Eur. J. Med. Chem.* **36**, 555–560.
Farrugia, L. J. (1997). *J. Appl. Cryst.* **30**, 565.
Farrugia, L. J. (1999). *J. Appl. Cryst.* **32**, 837–838.
Hans, R. H., Guantai, E. M., Lategan, C., Smith, P. J., Wan, B., Franzblau, S. G., Gut, J., Rosenthal, P. J. & Chibale, K. (2010). *Bioorg. Med. Chem. Lett.* **20**, 942–944.
Kayser, O. & Kiderlen, A. F. (2001). *Phytother. Res.* **15**, 148–152.