

## Design of Rectangular Beams under Torsion, Bending and Shear

ALI A. AKHTARUZZAMAN

*Civil Engineering Department, Faculty of Engineering,  
King Abdulaziz University, Jeddah, Saudi Arabia.*

**ABSTRACT.** A set of interactive strength equations based on the skew-bending model have been modified for designing rectangular beams subjected to torsion, bending and shear. The design procedure is a trial and error approach, and is based on the estimation of the required pure flexural moment capacity of the section to be designed. Torsion-bending-shear interaction data of a reference section have been used in estimating the pure flexural moment capacity. These data are presented in a tabular form and also as non-dimensional interaction diagrams. Four numerical examples covering different possible modes of failure are presented. The torsional moment capacities of the designed sections are compared with those given by the ACI code torsion equations.

### Introduction

Reinforced concrete beams under uneven floor loading as in the case of an edge beam in a building, are subjected to torsional moments. The fact that this affects the structural performance of members was long recognized by designers as well as by the ACI code<sup>[1]</sup>. Lack of adequate research, however, hindered the formulation of any suitable code provisions for the design of reinforced concrete members subjected to torsion. Subsequently, the ACI code<sup>[2]</sup> included design provisions, on the basis of Hsu's<sup>[3]</sup> work, for members subjected to torsion and torsion with shear. These, however, neglect the influence of bending moment on the torsional strength of beams, although the interdependence of torsional moment and bending moment capacities of reinforced concrete members was long indicated by different researchers<sup>[4-6]</sup>. This interdependence becomes more pronounced at low ranges of  $T/M$  ratios.

Since the late sixties, researchers have been investigating the torsion-bending interaction<sup>[7-11]</sup> as well as the torsion-bending-shear interaction<sup>[12-14]</sup>. Their works are

based either on the skew-bending model developed by Lessig<sup>[5]</sup> or on the space stress analogy propounded by Rausch<sup>[15]</sup>. Most of these works, however, concentrate on the analytical rather than the design aspect of the torsion problem.

Recently, Hasnat and Akhtaruzzaman<sup>[16]</sup> presented theoretical equations based on the skew-bending model for the entire range of torsion-bending-shear interaction for rectangular beams of solid cross-section as well as for beams containing a small opening. The equations are suitable for analyzing a given section and can be used to obtain its theoretical torsional moment capacity  $T_n$ , under any combination of torsion, bending and shear. In their present format, however, the equations are not suitable for application to design problems. In this paper, the basic strength equations are presented in a different form rendering them applicable to the design of rectangular beams under any loading combination.

### Basic Equations

The skew-bending model categorizes torsional failure of a reinforced concrete beam under three different modes: Mode 1, Mode 2 and Mode 3 depending on the location of a skewed compression zone near the top, side or bottom of the section, respectively. The failure pattern depends on the aspect ratio of the beam, the ratio between top and bottom longitudinal reinforcements, and the ratio between applied torsional moment and bending moment in combination with different values of shear force.

According to Hasnat and Akhtaruzzaman<sup>[16]</sup>,  $T_1$ ,  $T_2$  and  $T_3$ , the torsional moment capacities in Modes 1, 2 and 3, respectively, of a rectangular beam of solid section are given by

$$T_1 = \frac{2M_{01} K_1}{\Delta} \left[ \sqrt{\frac{1}{K_1} + \frac{1}{(\psi\Delta)^2}} - \frac{1}{\psi\Delta} \right] \quad (1)$$

$$T_2 = \frac{2 M_{01}}{1 + \delta} \sqrt{R_2 K_2} \quad (2)$$

$$T_3 = \frac{2M_{01} K_1}{\Delta'} \left[ \frac{1}{\psi\Delta'} - \sqrt{\frac{R_3}{K_1} + \frac{1}{(\psi\Delta')^2}} \right] \quad (3)$$

where

$$K_1 = \frac{(1 + 3\alpha) r}{(1 + 2\alpha)^2} \quad (4)$$

$$K_2 = \frac{(3 + \alpha) ar}{(2 + \alpha)^2} \quad (5)$$

$$R_2 = \frac{M_{02}}{M_{01}} \quad (6)$$

$$R_3 = \frac{M_{03}}{M_{01}} \quad (7)$$

$$r = \frac{A_w f_{wy}}{s} \frac{0.9 x_1 y_1}{M_{01}} \quad (8)$$

The smallest of the three torsional moment capacities,  $T_1$ ,  $T_2$  and  $T_3$ , is taken as the theoretical torsional moment capacity  $T_n$ , of the section.

In the above expressions  $A_w$  is the area of one leg of vertical stirrups,  $f_{wy}$  is the yield strength of stirrup steel,  $M_{01}$ ,  $M_{02}$  and  $M_{03}$  represent the bending moment capacities of the section in positive, lateral and negative bending, respectively,  $s$  is the stirrup spacing,  $x_1$  and  $y_1$  are the center-to-center dimensions of a long stirrup,  $\alpha$  is the aspect ratio of the beam section,  $\delta$  is a factor incorporating torsional moment and shear force acting at the section,  $\Delta$  and  $\Delta'$  are factors incorporating torsional moment, bending moment and shear force acting at the section and its cross sectional dimensions, and  $\psi$  is the ratio between torsional moment and bending moment acting at the section.

### Transformation of the Basic Equations

Equations 1, 2 and 3 indicate that the values of  $T_1$ ,  $T_2$  and  $T_3$  can be readily obtained once the various sectional and loading parameters are known.

In a design problem, however, where the sectional parameters are to be established, the equations cannot be readily used. Therefore, Eqs. 1, 2 and 3 are to be expressed in different forms to render them suitable for design applications. The required transformations of the basic equations are presented below.

#### Transformation of Eq. 1

By transposing and squaring both sides, Eq. 1 is written as

$$\left[ \frac{T_1 \Delta}{2M_{01} K_1} + \frac{1}{\psi \Delta} \right]^2 = \frac{1}{K_1} + \frac{1}{(\psi \Delta)^2} \quad (9)$$

Expanding the terms within the parentheses and cancelling  $1/(\psi \Delta)^2$  from both sides,

$$\frac{T_1^2 \Delta^2}{4M_{01}^2 K_1^2} + \frac{T_1}{M_{01} K_1 \psi} = \frac{1}{K_1} \quad (10)$$

or,

$$K_1 = \frac{T_1^2 \Delta^2}{4M_{01}^2} \cdot \frac{M_{01} \psi}{M_{01} \psi - T_1} \quad (11)$$

$$= \frac{k_1^2 \Delta^2}{4} \cdot \frac{\psi}{\psi - k_1} \quad (12)$$

where 
$$k_1 = \frac{T_1}{M_{01}} \quad (13)$$

Substituting for  $T_1$  from Eq. 1,

$$k_1 = \frac{2K_1}{\Delta} \left[ \sqrt{\frac{1}{K_1} + \frac{1}{(\psi\Delta)^2}} - \frac{1}{\psi\Delta} \right] \quad (14)$$

Equation 12 is the transformed form of Eq. 1.

### **Transformation of Eq. 2**

By transposing and squaring both sides, Eq. 2 is written as

$$\frac{T_2^2 (1 + \delta)^2}{4M_{01}^2} = R_2 K_2 \quad (15)$$

or 
$$K_2 = \frac{T_2^2 (1 + \delta)^2}{4M_{01}^2 R_2} \quad (16)$$

$$= \frac{k_2^2 (1 + \delta)^2}{4R_2} \quad (17)$$

where 
$$k_2 = \frac{T_2}{M_{01}} \quad (18)$$

Substituting for  $T_2$  from Eq. 2,

$$k_2 = \frac{2}{1 + \delta} \sqrt{R_2 K_2} \quad (19)$$

Replacing  $T_2$  by  $T_n (= T_u/\phi)$  for Mode 2 failure, where  $T_u$  and  $\phi$  are the factored torsional moment and the undercapacity factor, respectively, Eq. 18 becomes

$$M_{01} = \frac{M_n \psi}{k_2} \quad (20)$$

where 
$$\psi = \frac{T_n (= T_2)}{M_n} \quad (21)$$

Equation 17 is the transformed form of Eq. 2.

**Transformation of Eq. 3**

By transposing and squaring both sides, Eq. 3 is written as

$$\left[ \frac{T_3 \Delta'}{2M_{01} K_1} - \frac{1}{\psi \Delta'} \right]^2 = \frac{R_3}{K_1} + \frac{1}{(\psi \Delta')^2} \quad (22)$$

Expanding the terms within the parentheses and cancelling  $1/(\psi \Delta')^2$  from both sides,

$$\frac{T_3^2 \Delta'^2}{4M_{01}^2 K_1^2} - \frac{T_3}{M_{01} K_1 \psi} = \frac{R_3}{K_1} \quad (23)$$

or

$$K_1 = \frac{T_3^2 \Delta'^2}{4M_{01}^2} \left[ \frac{M_{01} \psi}{R_3 M_{01} \psi + T_3} \right] \quad (24)$$

$$= \frac{k_3^2 \Delta'^2 \psi}{4 (R_3 \psi + k_3)} \quad (25)$$

where

$$k_3 = \frac{T_3}{M_{01}} \quad (26)$$

Substituting for  $T_3$  from Eq. 3,

$$k_3 = \frac{2K_1}{\Delta'} \left[ \frac{1}{\psi \Delta'} - \sqrt{\frac{R_3}{K_1} + \frac{1}{(\psi \Delta')^2}} \right] \quad (27)$$

Equation 25 is the transformed form of Eq. 3 and is similar to that of Eq 1.

Equations 12, 17 and 25 are used for simultaneous application of torsion, bending and shear, can be readily used for torsion and bending only by putting  $\Delta = 1$ ,  $\delta = 0$  and  $\Delta' = -1$ . These substitutions reduce Eqs. 12, 17 and 25 to

$$K_1 = \frac{k_1^2}{4} \cdot \frac{\psi}{\psi - k_1} \quad (28)$$

$$K_2 = \frac{k_2^2}{4R_2} \quad (29)$$

$$K_1 = \frac{k_3^2 \psi}{4(R_3 \psi + k_3)} \quad (30)$$

**Design Procedures**

The design for torsion basically means determining the size and spacing of stirrups required to develop a desired torsional moment capacity  $T_n (= T_u/\phi)$  in a section when it is subjected to a factored bending moment  $M_u$  and a factored shear force  $V_u$ .

The section can be designed first for flexure to have a pure bending moment capacity  $M_{01}$  and then the required stirrup size and spacing can be determined to give adequate shear and torsional strengths. The pure bending moment capacity  $M_{01}$ , however, is not known initially and as shown in Fig. 1(a), depending on  $\psi$  and  $\lambda$ , the ratio between bending moment and shear force acting on the section, the factored moment  $M_u (= \phi M_n)$  is only a variable fraction of  $M_{01}$ . The pure flexural moment capacity  $M_{01}$ , nevertheless, can be obtained by using Eq. 13, 18 or 26 written as

$$M_{01} = \frac{T_1}{k_1} \tag{31}$$

$$M_{01} = \frac{T_2}{k_2} \tag{32}$$

$$M_{01} = \frac{T_3}{k_3} \tag{33}$$

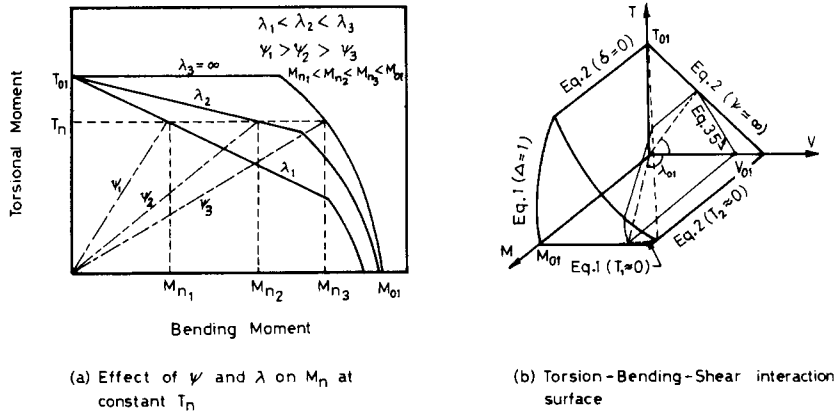


FIG. 1. Typical torsion-bending interaction diagrams and torsion-bending-shear interaction surface.

If  $k_1$ ,  $k_2$  and  $k_3$  are known, the pure flexural moment capacity  $M_{01}$  can be obtained by using the least of these with  $T_1$ ,  $T_2$  or  $T_3$  replaced by  $T_n$  in the corresponding equation. However, the values of  $k_1$ ,  $k_2$  and  $k_3$  themselves depend, among other things, on the section parameters, and so cannot be known initially. This problem can be overcome by a trial and error approach using a reference section of known dimensions and preferably having other variables identical to the section to be designed. The  $k_1$ ,  $k_2$  and  $k_3$  values of the reference section can be used to obtain an estimated pure flexural moment capacity  $M'_{01}$ .

A set of values of  $k_1$  and  $k_2$  of a typical  $250 \times 500$ mm reference section are presented in Table 1. The section has 10mm diameter stirrups at 100mm spacing with two 12mm diameter hangers, and concrete strength  $f'_c$  of 27.6 MPa,  $f_{wy}$  and  $f_y$ , the yield strengths of stirrup and longitudinal steel, of 276 MPa.

Table 1 contains values of  $k_1$  and  $k_2$  for three different steel ratios, and a range of  $T/M$  ratio ( $\psi$ ) and  $M/V$  ratio ( $\lambda$ ). For other values of these parameters,  $k_1$  and  $k_2$  can be interpolated. The table does not contain any values of  $k_3$ . The possibility of Mode 3 failure is checked separately as will be shown later. Although Table 1 is for particular values of material strengths and sectional properties, it can be used in any initial trial calculation, for other values of these also. The subsequent calculations are self-adjusting in nature.

TABLE 1. Values of  $k_1$  and  $k_2$  of a 250 × 500mm reference section.

| Ratio<br>$T/M$ | $\rho = \rho_{max} = 0.0370$ |                  |                  |                  |                  |                  |                    | $\rho = 0.50 \rho_{max} = 0.0185$ |                  |                  |                  |                  |                  |                    | $\rho = 0.25 \rho_{max} = 0.00925$ |                  |                  |                  |                  |                  |                    |
|----------------|------------------------------|------------------|------------------|------------------|------------------|------------------|--------------------|-----------------------------------|------------------|------------------|------------------|------------------|------------------|--------------------|------------------------------------|------------------|------------------|------------------|------------------|------------------|--------------------|
|                | $\lambda = 0.05$             | $\lambda = 0.10$ | $\lambda = 0.20$ | $\lambda = 0.60$ | $\lambda = 1.00$ | $\lambda = 1.50$ | $\lambda = \infty$ | $\lambda = 0.05$                  | $\lambda = 0.10$ | $\lambda = 0.20$ | $\lambda = 0.60$ | $\lambda = 1.00$ | $\lambda = 1.50$ | $\lambda = \infty$ | $\lambda = 0.05$                   | $\lambda = 0.10$ | $\lambda = 0.20$ | $\lambda = 0.60$ | $\lambda = 1.00$ | $\lambda = 1.50$ | $\lambda = \infty$ |
| 0.02           | 0.0012                       | 0.0024           | 0.0047           | 0.0132           | 0.0166           | 0.0179           | 0.0198             | 0.0016                            | 0.0031           | 0.0062           | 0.0159           | 0.0178           | 0.0187           | 0.0199             | 0.0022                             | 0.0044           | 0.0087           | 0.0174           | 0.0187           | 0.0193           | 0.0199             |
| 0.04           | 0.0024                       | 0.0047           | 0.0091           | 0.0243           | 0.0313           | 0.0338           | 0.0384             | 0.0031                            | 0.0062           | 0.0119           | 0.0304           | 0.0341           | 0.0360           | 0.0391             | 0.0044                             | 0.0087           | 0.0169           | 0.0337           | 0.0364           | 0.0377           | 0.0395             |
| 0.06           | 0.0035                       | 0.0069           | 0.0132           | 0.0338           | 0.0441           | 0.0476           | 0.0551             | 0.0047                            | 0.0091           | 0.0174           | 0.0435           | 0.0489           | 0.0517           | 0.0570             | 0.0066                             | 0.0129           | 0.0247           | 0.0489           | 0.0530           | 0.0550           | 0.0583             |
| 0.08           | 0.0049                       | 0.0091           | 0.0171           | 0.0419           | 0.0553           | 0.0597           | 0.0696             | 0.0062                            | 0.0119           | 0.0225           | 0.0553           | 0.0622           | 0.0659           | 0.0734             | 0.0087                             | 0.0169           | 0.0320           | 0.0630           | 0.0685           | 0.0713           | 0.0762             |
| 0.10           | 0.0058                       | 0.0122           | 0.0208           | 0.0490           | 0.0650           | 0.0701           | 0.0819             | 0.0076                            | 0.0147           | 0.0274           | 0.0644           | 0.0741           | 0.0786           | 0.0881             | 0.0108                             | 0.0209           | 0.0389           | 0.0761           | 0.0828           | 0.0863           | 0.0929             |
| 0.12           | 0.0069                       | 0.0132           | 0.0243           | 0.0552           | 0.0736           | 0.0792           | 0.0924             | 0.0091                            | 0.0174           | 0.0320           | 0.0726           | 0.0849           | 0.0900           | 0.1011             | 0.0129                             | 0.0247           | 0.0454           | 0.0882           | 0.0961           | 1.003            | 1.085              |
| 0.14           | 0.0080                       | 0.0152           | 0.0276           | 0.0607           | 0.0798           | 0.0871           | 0.1013             | 0.0105                            | 0.0200           | 0.0363           | 0.0798           | 0.0946           | 0.1002           | 0.1127             | 0.0149                             | 0.0284           | 0.0516           | 0.0995           | 0.1084           | 0.1130           | 0.1228             |
| 0.16           | 0.0091                       | 0.0171           | 0.0308           | 0.0658           | 0.0847           | 0.0941           | 0.1088             | 0.0119                            | 0.0225           | 0.0405           | 0.0863           | 0.1033           | 0.1093           | 0.1229             | 0.0169                             | 0.0320           | 0.0575           | 0.1099           | 0.1197           | 0.1249           | 0.1358             |
| 0.18           | 0.0101                       | 0.0190           | 0.0338           | 0.0700           | 0.0891           | 0.1003           | 0.1154             | 0.0133                            | 0.0250           | 0.0444           | 0.0921           | 0.1113           | 0.1176           | 0.1319             | 0.0189                             | 0.0355           | 0.0630           | 0.1197           | 0.1301           | 0.1358           | 0.1479             |
| 0.20           | 0.0112                       | 0.0208           | 0.0366           | 0.0739           | 0.0929           | 0.1066           | 0.1210             | 0.0147                            | 0.0274           | 0.0481           | 0.0973           | 0.1185           | 0.1250           | 0.1399             | 0.0209                             | 0.0389           | 0.0683           | 0.1287           | 0.1398           | 0.1458           | 0.1588             |
| 0.22           | 0.0122                       | 0.0226           | 0.0393           | 0.0775           | 0.0963           | 0.1094           | 0.1259             | 0.0161                            | 0.0297           | 0.0517           | 0.1020           | 0.1250           | 0.1317           | 0.1470             | 0.0228                             | 0.0422           | 0.0734           | 0.1371           | 0.1487           | 0.1550           | 0.1688             |
| 0.24           | 0.0132                       | 0.0243           | 0.0419           | 0.0808           | 0.0993           | 0.1121           | 0.1302             | 0.0174                            | 0.0320           | 0.0551           | 0.1063           | 0.1306           | 0.1378           | 0.1533             | 0.0247                             | 0.0454           | 0.0782           | 0.1449           | 0.1569           | 0.1636           | 0.1780             |
| 0.26           | 0.0142                       | 0.0260           | 0.0443           | 0.0838           | 0.1019           | 0.1143           | 0.1340             | 0.0187                            | 0.0342           | 0.0583           | 0.1103           | 0.1341           | 0.1433           | 0.1590             | 0.0266                             | 0.0485           | 0.0828           | 0.1522           | 0.1646           | 0.1714           | 0.1864             |
| 0.28           | 0.0152                       | 0.0276           | 0.0467           | 0.0866           | 0.1044           | 0.1163           | 0.1374             | 0.0200                            | 0.0363           | 0.0614           | 0.1139           | 0.1373           | 0.1484           | 0.1641             | 0.0284                             | 0.0516           | 0.0872           | 0.1590           | 0.1717           | 0.1787           | 0.1940             |
| 0.30           | 0.0162                       | 0.0292           | 0.0490           | 0.0891           | 0.1066           | 0.1181           | 0.1404             | 0.0213                            | 0.0384           | 0.0644           | 0.1172           | 0.1402           | 0.1530           | 0.1687             | 0.0302                             | 0.0546           | 0.0914           | 0.1655           | 0.1784           | 0.1854           | 0.2011             |
| 0.32           | 0.0171                       | 0.0308           | 0.0511           | 0.0914           | 0.1086           | 0.1198           | 0.1431             | 0.0225                            | 0.0405           | 0.0673           | 0.1203           | 0.1428           | 0.1573           | 0.1729             | 0.0320                             | 0.0575           | 0.0954           | 0.1715           | 0.1846           | 0.1917           | 0.2076             |
| 0.34           | 0.0181                       | 0.0323           | 0.0532           | 0.0936           | 0.1104           | 0.1212           | 0.1456             | 0.0238                            | 0.0425           | 0.0699           | 0.1231           | 0.1452           | 0.1595           | 0.1767             | 0.0337                             | 0.0603           | 0.0993           | 0.1747           | 0.1903           | 0.1976           | 0.2135             |
| 0.36           | 0.0190                       | 0.0338           | 0.0552           | 0.0956           | 0.1121           | 0.1226           | 0.1478             | 0.0250                            | 0.0444           | 0.0726           | 0.1258           | 0.1474           | 0.1613           | 0.1802             | 0.0355                             | 0.0630           | 0.1030           | 0.1786           | 0.1957           | 0.2030           | 0.2191             |
| 0.38           | 0.0199                       | 0.0352           | 0.0571           | 0.0975           | 0.1136           | 0.1238           | 0.1498             | 0.0262                            | 0.0463           | 0.0751           | 0.1283           | 0.1494           | 0.1629           | 0.1834             | 0.0372                             | 0.0657           | 0.1066           | 0.1821           | 0.2008           | 0.2081           | 0.2242             |
| 0.40           | 0.0208                       | 0.0366           | 0.0589           | 0.0993           | 0.1150           | 0.1249           | 0.1517             | 0.0274                            | 0.0481           | 0.0775           | 0.1306           | 0.1513           | 0.1644           | 0.1864             | 0.0389                             | 0.0683           | 0.1100           | 0.1854           | 0.2056           | 0.2129           | 0.2290             |
| 0.42           | 0.0217                       | 0.0380           | 0.0607           | 0.1009           | 0.1163           | 0.1259           | 0.1509             | 0.0286                            | 0.0499           | 0.0798           | 0.1327           | 0.1530           | 0.1657           | 0.1891             | 0.0405                             | 0.0709           | 0.1133           | 0.1884           | 0.2101           | 0.2174           | 0.2334             |
| 0.44           | 0.0226                       | 0.0393           | 0.0624           | 0.1024           | 0.1176           | 0.1269           | 0.1509             | 0.0297                            | 0.0517           | 0.0820           | 0.1348           | 0.1546           | 0.1670           | 0.1916             | 0.0422                             | 0.0734           | 0.1165           | 0.1913           | 0.2143           | 0.2216           | 0.2375             |
| 0.46           | 0.0234                       | 0.0406           | 0.0640           | 0.1039           | 0.1187           | 0.1278           | 0.1509             | 0.0309                            | 0.0534           | 0.0842           | 0.1369           | 0.1562           | 0.1681           | 0.1940             | 0.0438                             | 0.0758           | 0.1195           | 0.1940           | 0.2183           | 0.2255           | 0.2413             |
| 0.48           | 0.0243                       | 0.0419           | 0.0656           | 0.1053           | 0.1198           | 0.1287           | 0.1509             | 0.0320                            | 0.0551           | 0.0863           | 0.1385           | 0.1576           | 0.1692           | 0.1961             | 0.0454                             | 0.0782           | 0.1224           | 0.1966           | 0.2220           | 0.2292           | 0.2450             |
| 0.50           | 0.0252                       | 0.0431           | 0.0671           | 0.1066           | 0.1208           | 0.1294           | 0.1509             | 0.0331                            | 0.0567           | 0.0883           | 0.1402           | 0.1589           | 0.1702           | 0.1982             | 0.0470                             | 0.0805           | 0.1253           | 0.1990           | 0.2256           | 0.2327           | 0.2484             |
| 0.60           | 0.0292                       | 0.0489           | 0.0739           | 0.1121           | 0.1249           | 0.1325           | 0.1509             | 0.0384                            | 0.0644           | 0.0973           | 0.1474           | 0.1644           | 0.1744           | 0.1986             | 0.0546                             | 0.0914           | 0.1381           | 0.2092           | 0.2333           | 0.2477           | 0.2626             |
| 0.70           | 0.0330                       | 0.0542           | 0.0798           | 0.1163           | 0.1281           | 0.1349           | 0.1509             | 0.0434                            | 0.0713           | 0.1049           | 0.1530           | 0.1685           | 0.1775           | 0.1986             | 0.0617                             | 0.1012           | 0.1489           | 0.2172           | 0.2392           | 0.2519           | 0.2734             |
| 0.80           | 0.0366                       | 0.0589           | 0.0847           | 0.1198           | 0.1306           | 0.1367           | 0.1509             | 0.0481                            | 0.0775           | 0.1115           | 0.1576           | 0.1718           | 0.1799           | 0.1986             | 0.0683                             | 0.1100           | 0.1583           | 0.2237           | 0.2438           | 0.2553           | 0.2819             |
| 0.90           | 0.0399                       | 0.0632           | 0.0891           | 0.1226           | 0.1325           | 0.1382           | 0.1509             | 0.0526                            | 0.0831           | 0.1172           | 0.1613           | 0.1744           | 0.1818           | 0.1986             | 0.0746                             | 0.1180           | 0.1664           | 0.2289           | 0.2475           | 0.2580           | 0.2819             |
| 1.00           | 0.0431                       | 0.0671           | 0.0929           | 0.1249           | 0.1342           | 0.1393           | 0.1509             | 0.0567                            | 0.0883           | 0.1222           | 0.1644           | 0.1765           | 0.1833           | 0.1986             | 0.0805                             | 0.1253           | 0.1735           | 0.2333           | 0.2506           | 0.2602           | 0.2819             |
| 1.50           | 0.0566                       | 0.0823           | 0.1066           | 0.1325           | 0.1393           | 0.1430           | 0.1509             | 0.0745                            | 0.1083           | 0.1402           | 0.1744           | 0.1833           | 0.1881           | 0.1986             | 0.1057                             | 0.1538           | 0.1990           | 0.2475           | 0.2602           | 0.2671           | 0.2819             |
| 2.00           | 0.0671                       | 0.0929           | 0.1150           | 0.1367           | 0.1421           | 0.1449           | 0.1509             | 0.0883                            | 0.1222           | 0.1513           | 0.1799           | 0.1869           | 0.1906           | 0.1986             | 0.1253                             | 0.1735           | 0.2148           | 0.2553           | 0.2653           | 0.2706           | 0.2819             |
| 2.50           | 0.0755                       | 0.1006           | 0.1208           | 0.1393           | 0.1438           | 0.1461           | 0.1509             | 0.0993                            | 0.1324           | 0.1589           | 0.1833           | 0.1891           | 0.1922           | 0.1986             | 0.1409                             | 0.1879           | 0.2255           | 0.2602           | 0.2685           | 0.2728           | 0.2819             |
| 3.00           | 0.0823                       | 0.1066           | 0.1249           | 0.1412           | 0.1449           | 0.1469           | 0.1509             | 0.1083                            | 0.1402           | 0.1644           | 0.1857           | 0.1906           | 0.1932           | 0.1986             | 0.1538                             | 0.1990           | 0.2333           | 0.2636           | 0.2706           | 0.2743           | 0.2819             |
| 4.00           | 0.0929                       | 0.1150           | 0.1306           | 0.1435           | 0.1464           | 0.1479           | 0.1509             | 0.1222                            | 0.1513           | 0.1718           | 0.1888           | 0.1926           | 0.1945           | 0.1986             | 0.1735                             | 0.2148           | 0.2438           | 0.2679           | 0.2734           | 0.2761           | 0.2819             |
| 5.00           | 0.1006                       | 0.1208           | 0.1342           | 0.1449           | 0.1473           | 0.1485           | 0.1509             | 0.1324                            | 0.1589           | 0.1765           | 0.1906           | 0.1937           | 0.1953           | 0.1986             | 0.1879                             | 0.2255           | 0.2506           | 0.2706           | 0.2750           | 0.2773           | 0.2819             |
| 6.00           | 0.1066                       | 0.1249           | 0.1367           | 0.1459           | 0.1479           | 0.1489           | 0.1509             | 0.1402                            | 0.1644           | 0.1799           | 0.1919           | 0.1945           | 0.1959           | 0.1986             | 0.1990                             | 0.2333           | 0.2553           | 0.2724           | 0.2761           | 0.2780           | 0.2819             |
| 8.00           | 0.1150                       | 0.1306           | 0.1400           | 0.1471           | 0.1486           | 0.1494           | 0.1509             | 0.1513                            | 0.1718           | 0.1842           | 0.1935           | 0.1955           | 0.1965           | 0.1986             | 0.2148                             | 0.2438           | 0.2615           | 0.2747           | 0.2775           | 0.2790           | 0.2819             |
| 10.0           | 0.1208                       | 0.1342           | 0.1421           | 0.1479           | 0.1491           | 0.1497           | 0.1509             | 0.1589                            | 0.1765           | 0.1869           | 0.1945           | 0.1961           | 0.1969           | 0.1986             | 0.2255                             | 0.2506           | 0.2653           | 0.2761           | 0.2784           | 0.2796           | 0.2819             |
| 15.0           | 0.1294                       | 0.1393           | 0.1449           | 0.1489           | 0.1497           | 0.1501           | 0.1509             | 0.1702                            | 0.1833           | 0.1906           | 0.1959           | 0.1969           | 0.1975           | 0.1986             | 0.2416                             | 0.2602           | 0.2706           | 0.2761           | 0.2796           | 0.2803           | 0.2819             |
| 20.0           | 0.1342                       | 0.1421           | 0.1464           | 0.1494           | 0.1500           | 0.1503           | 0.1509             | 0.1765                            | 0.1869           | 0.1926           | 0.1965           | 0.1974           | 0.1978           | 0.1986             | 0.2506                             | 0.2653           | 0.2734           | 0.2790           | 0.2801           | 0.2807           | 0.2819             |
| 25.0           | 0.1372                       | 0.1438           | 0.1473           | 0.1497           | 0.1502           | 0.1504           | 0.1509             | 0.1805                            | 0.1891           | 0.1937           | 0.1969           | 0.1976           | 0.1979           | 0.1986             | 0.2563                             | 0.2685           | 0.2750           | 0.2796           | 0.2805           | 0.2810           | 0.2819             |
| 30.0           | 0.1393                       | 0.1449           | 0.1479           | 0.1499           | 0.1503           | 0.1505           | 0.1509             | 0.1833                            | 0.1906           | 0.1945           | 0.1972           | 0.1978           | 0.1980           | 0.1986             | 0.2602                             | 0.2706           | 0.2761           | 0.2799           | 0.2807           | 0.2811           | 0.2819             |
| 40.0           | 0.1421                       | 0.1464           | 0.1486           | 0.1502           | 0.1505           | 0.1506           | 0.1509             | 0.1869                            | 0.1926           | 0.1955           | 0.1976           | 0.1980           | 0.1982           | 0.1986             | 0.2653                             | 0.2734           | 0.2776           | 0.2804           | 0.2810           | 0.2813           | 0.2819             |
| 50.0           | 0.1438                       | 0.1473           | 0.1491           | 0.1503           | 0.1506           | 0.1507           | 0.1509             | 0.1891                            | 0.1937           | 0.1961           | 0.1978           | 0.1981           | 0.1983           | 0.1986             | 0.2685                             | 0.2750           | 0.2784           | 0.2807           | 0.2812           | 0.2814           | 0.2819             |
| $\infty$       | 0.1509                       | 0.1509           | 0.1509           | 0.1509           | 0.1509           | 0.1509           | 0.1509             | 0.1986                            | 0.1986           | 0.1986           | 0.1986           | 0.1986           | 0.1986           | 0.1986             | 0.1986                             | 0.1986           | 0.1986           | 0.1986           | 0.1986           | 0.1986           | 0.1986             |

The  $k_1$  values are enclosed by thick lines.

In Table 1, the  $k_1$  values are boxed separately. At any  $\psi$ , only the controlling value of  $k_1$  or  $k_2$ , *i.e.*, the smaller of the two, is listed. The  $\psi$  at which both values are listed is a transitional  $\psi$  between Mode 1 and Mode 2 failures, or is very close to it.

The values of  $k_1$  and  $k_2$  can also be presented as a set of non-dimensional torsion-bending interaction diagrams. A typical set of such diagrams for the  $250 \times 500$ mm reference section with  $\rho = 0.50 \rho_{\max}$  are shown in Fig. 2. The ordinate of any of the interaction diagrams corresponding to a given combination of  $\psi$  and  $\lambda$ , gives the value of  $k_1$  or  $k_2$  depending on the controlling mode of failure indicated in the figure.

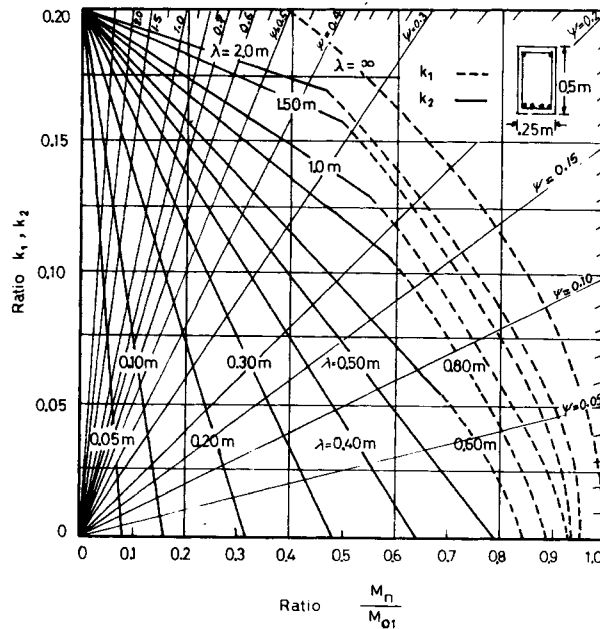


FIG. 2. Interaction diagrams for the  $250 \times 500$ mm reference section.

Once  $M'_{o1}$  is estimated, as described above, the section is then designed for flexure. Next, depending on whether  $k_1$  or  $k_2$  was used to find  $M'_{o1}$ , the appropriate equations are used to carry out the torsion design of the section.

In the next section, four design examples are presented; Examples 1 and 2 show designs of Mode 1 and Mode 2 controlled cases, respectively, while Example 3 shows a case with its design  $\psi$  very close to a transitional  $\psi$  of the reference section. Example 4 illustrates how the torsional moment capacity in Mode 3 is enhanced, if required, as discussed below.

After a section is designed as described, its torsional capacities in Modes 1, 2 and 3 are checked. Since only  $k_1$  or  $k_2$  was used in obtaining  $M'_{o1}$ , the checking may indicate



a premature failure in Mode 3, especially if the design  $\psi$  is high or the section has a low top steel ratio,  $\rho'$ . In that case, the design is modified by increasing the top steel area  $A'_s$ . Equation 23 can be expressed in a different form to obtain the value of  $R_3$  required to ensure adequate strength in Mode 3. Replacing  $T_3$  by  $T_n$  for Mode 3 failure and cancelling  $1/K_1$  from both sides, Eq. 23 can be written as

$$R_3 = \frac{T_n^2 \Delta'^2}{4M_{01}^2 K} - \frac{T_n}{M_{01} \psi} \quad (34)$$

Equation 34 gives the required value of  $R_3$ . Next, the corresponding  $A_{03}$  and hence the top steel area  $A'_s$  required to give an adequate torsional capacity in Mode 3 can be obtained to finalize the design as will be illustrated in Example 4 as mentioned earlier.

After a section has been designed for flexure and torsion as outlined above, its shear capacity is checked. This is of particular importance in cases where  $\lambda_{01}$  ( $= M_{01}/V_{01}$  where  $V_{01}$  is the pure shear capacity  $\lambda$ ) is greater than or close to the design  $\lambda$ . This is because, as indicated in Fig. 1(b), at this range of  $\lambda$ , the shear capacity of a section is overestimated by Eq. 2.

Collins *et al.*<sup>[8]</sup> suggested that the reduced nominal shear capacity  $\bar{V}_n$ , of a section subjected to torsion, bending and shear, can be obtained from

$$V_{01} = \bar{V}_n + 1.6 \frac{T_n}{b} \quad (35)$$

in which the pure shear capacity  $V_{01}$ , is given by

$$V_{01} = V_c + V_s \quad (36)$$

$$= 0.17 \sqrt{f'_c} bd + \frac{2 A_w f_{wy} d}{s} \quad (37)$$

where  $b$  and  $d$  represent the width and effective depth of the section, respectively.

If  $\bar{V}_n \geq V_u/\phi$ , then the shear capacity of the section is deemed to be adequate. However, if  $\bar{V}_n < V_u/\phi$ , then the shear capacity of the section is to be increased as illustrated in Examples 1 and 2.

The design procedures discussed above are listed below.

#### A. Design for flexure

1.  $k_1$  or  $k_2$  is obtained from Table 1 for the design values of  $\psi$  and  $\lambda$ , and an assumed value of  $\rho$ .
2. Estimated pure flexural moment  $M'_{01}$ , is obtained at  $T_u/\phi(k_1$  or  $k_2)$  and a section is designed for flexure using  $M'_{01}$ . Then steps (3) through (5) are followed if

Mode 1 controls (for  $k_1 < k_2$ ). Otherwise, steps (6) through (8) are followed.

**B. Design for torsion (Mode 1 controls)**

3. Values of  $M_{01}$ ,  $\alpha$ ,  $\mu$ ,  $\Delta$  and  $k_1 (= T_u/\phi M_{01})$  of the section designed in step (2) are obtained, where  $\mu$  is a factor involving section dimensions.

4. Equations 12 and 8 are used to find  $K_1$  and  $r$  in terms of stirrup spacing  $s$  for an assumed size of stirrup.

5. The values of  $K_1$  and  $r$  are substituted in Eq. 4 to obtain stirrup spacing  $s$ . The calculations may be repeated for a different stirrup size until a suitable spacing is obtained. A practical spacing is selected and step (9) is carried out.

**C. Design for torsion (Mode 2 controls)**

6. Values of  $M_{02}$ ,  $R_2$  and  $\delta$  of the section designed in step (2) are obtained.

7. Equations 16 and 8 are used to find  $K_2$  and  $r$  in terms of  $s$  for an assumed size of stirrup.

8. The values of  $K_2$  and  $r$  are substituted in Eq. 5 to find stirrup spacing  $s$ . The calculations are repeated until a suitable spacing is obtained. A practical spacing is selected and step (9) is carried out.

**D. Checking shear capacity**

9. Equations 37 and 35 are used to get  $V_{01}$  and  $\bar{V}_n$ , respectively. If  $\bar{V}_n \geq V_u/\phi$ , step (11) is performed. Otherwise, step (10) is carried out.

10.  $\bar{V}_n$  is replaced by  $V_u/\phi$  in Eq. 35 to obtain the required enhanced  $V_{01}$  which is then substituted in Eq. 37 to obtain the stirrup spacing needed to satisfy the shear requirement. A practical spacing is selected and step (11) is performed.

**E. Checking torsion capacity**

11. The torsional moment capacities in Modes 1, 2 and 3, of the section are checked by using Eqs. 1, 2 and 3 to ensure  $T_n \leq T_1$ ,  $T_2$  and  $T_3$ .

12. If  $T_3 < T_n$ , Eq. 34 is used to ensure adequate torsional moment capacity in Mode 3 by providing the required top steel area.

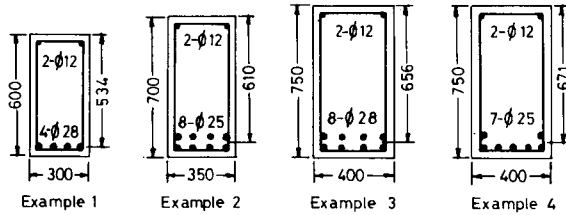
### Design Examples

Four design examples covering Modes 1, 2 and 3 as well as shear governed failure cases are presented. Some of these have  $\alpha$  and  $\rho$  different from those of the 250 × 500mm reference section illustrating the usefulness of Table 1 for such cases. Examples 1, 2 and 3 have been designed with  $\rho = 0.5 \rho_{\max}$  ( $=0.0185$ ) and Example 4 with  $\rho = 0.0120$ . The nominal values of torsional moment, bending moment and shear force used in the examples, are presented in Table 2. In all the examples,  $f'_c$  is taken as 27.6 MPa with  $f_{wy}$  and  $f_y$  as 276 MPa. Results of calculations are presented in Tables 4, 5 and 6. Figure 3 shows the sections selected at various stages of design.

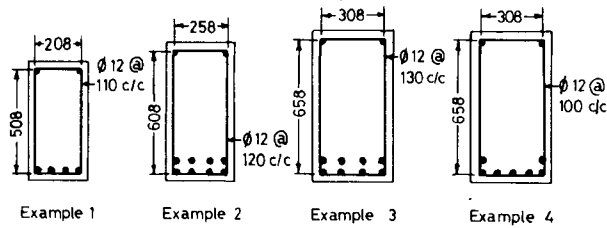
TABLE 2. Data used in the design examples.

| Example No. | $\frac{T_u}{0.85}$<br>(kN-m)<br>(2) | $\frac{M_u}{0.90}$<br>(kN-m)<br>(3) | $\frac{V_u}{0.85}$<br>(kN)<br>(4) | $\psi =$<br>col. (2)<br>col. (3)<br>(5) | $\lambda =$<br>col. (3)<br>col. (4)<br>(m)<br>(6) | Assumed steel ratio<br>(7) | From Table 1 |        | $M'_{01} =$<br>col. (2)<br>col. (8) or (9)<br>(kN-m)<br>(10) |
|-------------|-------------------------------------|-------------------------------------|-----------------------------------|---|---|----------------------------|--------------|--------|--|
|             |                                     |                                     |                                   |   |   |                            | $k_1$        | $k_2$  |  |
|             |                                     |                                     |                                   |   |   |                            | (8)          | (9)    |  |
| 1           | 10.0                                | 250.0                               | 420.0                             | 0.04                                    | 0.60  | 0.0185*                    | 0.0304       | -      | 328.95   |
| 2           | 75.0                                | 150.0                               | 250.0                             | 0.50                                    | 0.60  | 0.0185*                    | -            | 0.1402 | 534.95   |
| 3           | 115.0                               | 360.0                               | 240.0                             | 0.32                                    | 1.50  | 0.0185*                    | 0.1573       | 0.1576 | 731.09   |
| 4           | 120.0                               | 30.0                                | 150.0                             | 4.00                                    | 0.20  | 0.0120                     | -            | 0.2224 | 539.57   |

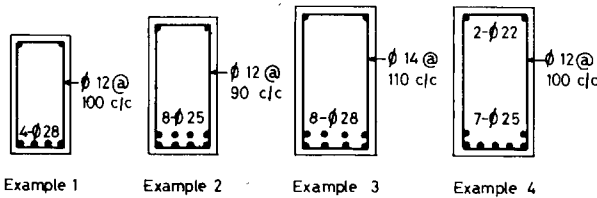
\* $\rho = 0.5 \rho_{max}$



(a) Trial sections selected for estimated pure moment  $M'_{01}$  (all with assumed 12mm diameter stirrups)



(b) Trial sections with stirrup spacings obtained for Mode 1 or Mode 2 failure consideration



(c) Final design (all with 40mm clear cover and 12mm diameter hangers unless indicated otherwise)

Note: All dimensions are in millimeters.

FIG. 3. Details of beam sections designed.

**Example 1**

Design a rectangular beam section if  $T_u = 8.5$  kN-m,  $M_u = 225.0$  kN-m and  $V_n = 357.0$  kN.

*Design for flexure*

The design values of  $\psi$  and  $\lambda$  along with that of  $k_1$  obtained from Table 1, are presented in Table 2. It also contains the estimated required pure flexural moment  $M'_{01}$  (= 328.95 kN-m). Preliminary calculations indicate that a 300 × 600mm section with four 28mm diameter bars will be satisfactory. The pure flexural moment capacity  $M_{01}$  of the section is computed, with assumed 10mm diameter stirrups and 40mm clear cover, as 331.16 kN-m.

The  $\alpha$ ,  $\mu$ ,  $\Delta$  and  $\Delta'$  values of the trial section are identical to those listed in Table 4.

*Design for torsion*

Since Mode 1 behavior is indicated, replacing  $T_1$  by  $T_u/\phi$  in Eq. 13,  $k_1 = 0.03020$ . Substituting the values of  $k_1$ ,  $\psi$  and  $\Delta$  in Eq. 12,  $K_1 = 0.02128$ . Also, substituting the value of  $\alpha$  (= 2.0) in Eq. 4,  $K_1 = 0.280r$ . Equating the two values of  $K_1$ ,  $r = 0.0760$ .

Next, from Eq. 8, for 10mm diameter stirrups,  $r = 6.306/s$ . Thus,  $s = 82.9$ mm. Therefore, 10mm diameter stirrups may be used at 80mm spacing. However, this spacing may be deemed to be too small and a larger size, *i.e.*, 12mm diameter stirrup can be used as shown herein.

The trial section with 12mm diameter stirrups is shown in Fig. 3(a), and its details are listed in Table 3. The flexural moment capacities of the section in positive, lateral

TABLE 3. Details of the trial sections shown in Fig. 3(a)

| Example No. | $b$<br>(mm) | $h$<br>(mm) | $A_s$<br>(mm <sup>2</sup> ) | $d$<br>(mm) | $d_2$<br>(mm) | $d_3$<br>(mm) | $x_1$<br>(mm) | $y_1$<br>(mm) |
|-------------|-------------|-------------|-----------------------------|-------------|---------------|---------------|---------------|---------------|
| (1)         | (2)         | (3)         | (4)                         | (5)         | (6)           | (7)           | (8)           | (9)           |
| 1           | 300         | 600         | 2460                        | 534         | 254           | 542           | 208           | 508           |
| 2           | 350         | 700         | 3930                        | 610         | 304           | 642           | 258           | 608           |
| 3           | 400         | 750         | 4930                        | 656         | 354           | 692           | 308           | 658           |
| 4           | 400         | 750         | 3440                        | 671         | 354           | 692           | 308           | 658           |

TABLE 4. Flexural moment capacities and other parameters of the sections shown in Fig. 3(a).

| Example No. | $M_{01}$<br>(kN-m) | $M_{02}$<br>(kN-m) | $M_{03}$<br>(kN-m) | $R_2 = \frac{M_{02}}{M_{01}}$ | $R_3 = \frac{M_{03}}{M_{01}}$ | $\alpha = \frac{b}{h}$ | $\mu = \frac{b^2 + bh}{2b + 4h}$<br>(mm) | $\delta = \frac{b}{2\psi\lambda}$ | $\Delta = 1 + \frac{\mu}{\psi\lambda}$ | $\Delta' = -1 + \frac{\mu}{\psi\lambda}$ | $r = \frac{A_w f_w 0.9 x_1 y_1}{s M_{01}}$ |
|-------------|--------------------|--------------------|--------------------|-------------------------------|-------------------------------|------------------------|--|-----------------------------------|--|--|--|
| (1)         | (2)                | (3)                | (4)                | (5)                           | (6)                           | (7)                    | (8)                                      | (9)                               | (10)                                   | (11)                                     | (12)                                       |
| 1           | 329.80             | 89.28              | 33.53              | 0.27070                       | 0.10166                       | 2.000                  | 90.0                                     | 6.3025                            | 4.782                                  | 2.782                                    | 8.993/s                                    |
| 2           | 589.76             | 164.26             | 39.82              | 0.27852                       | 0.06752                       | 2.000                  | 105.0                                    | 0.5833                            | 1.350                                  | -0.650                                   | 7.446/s                                    |
| 3           | 793.69             | 237.43             | 42.97              | 0.29915                       | 0.05414                       | 1.875                  | 121.1                                    | 0.4167                            | 1.252                                  | -0.748                                   | 7.170/s                                    |
| 4           | 588.57             | 171.69             | 42.97              | 0.29171                       | 0.07301                       | 1.875                  | 121.1                                    | 0.2500                            | 1.150                                  | -0.850                                   | 9.665/s                                    |

and negative bending are given in Table 4. Using  $M_{01} = 329.80$  kN-m from Table 4 and replacing  $T_1$  by  $T_u/\phi$  in Eq. 13,  $k_1 = 0.03032$ . Substituting the values of  $k_1$ ,  $\psi$  and  $\Delta$  in Eq. 12,  $K_1 = 0.02172$ . Equating this with the value of  $K_1$  given by Eq. 4,  $r = 0.07757$ .

Also, as shown in Table 4, Eq. 8 gives  $r = 8.993/s$ . Equating the two values of  $r$ ,  $s = 115.9$ mm. Therefore, 12mm diameter stirrups are selected with 110mm spacing as shown in Fig. 3(b).

#### Checking for shear

The pure shear capacity  $V_{01}$ , and  $\lambda_{01}$  of the section shown in Fig. 3(b) are computed in Table 5. From Eq. 35,  $\bar{V}_n = 392.6$  kN  $< V_u/\phi (= 420.0$  kN).

TABLE 5. Pure shear capacity and  $\lambda_{01}$  of the sections shown in Fig. 3(b).

| Example No. | $b$  | $d$  | $V_c =$<br>$0.17 \sqrt{f'_c} bd$ | $s$  | $V_s =$<br>$\frac{2A_w f_{wy} d}{s}$ | $V_{01} =$<br>$V_c + V_s$ | $M_{01}$ | $\lambda_{01} =$<br>$\frac{M_{01}}{V_{01}}$ |
|-------------|------|------|----------------------------------|------|--------------------------------------|---------------------------|----------|---|
| (1)         | (mm) | (mm) | (kN)                             | (mm) | (kN)                                 | (kN)                      | (kN-m)   | (m)   |
| (1)         | (2)  | (3)  | (4)                              | (5)  | (6)                                  | (7)                       | (8)      | (9)   |
| 1           | 300  | 534  | 143.1                            | 110  | 302.8                                | 445.9                     | 329.81   | 0.740                                       |
| 2           | 350  | 610  | 190.7                            | 120  | 317.1                                | 507.8                     | 589.76   | 1.160                                       |
| 3           | 400  | 656  | 234.4                            | 130  | 314.7                                | 549.1                     | 793.69   | 1.445                                       |
| 4           | 400  | 671  | 239.7                            | 100  | 418.5                                | 658.2                     | 588.57   | 0.894                                       |

The required enhanced pure shear capacity of the section is, therefore, obtained by replacing  $\bar{V}_n$  by  $V_u/\phi$  in Eq. 35 as  $420 + 1.6T_u/\phi b = 473.3$  kN. Next, putting  $V_{01} = 473.3$  kN in Eq. 37,  $s = 100.9$ mm. Therefore, the stirrup spacing is reduced from 110mm to 100mm as shown in Fig. 3(c).

#### Torsional moment capacity

The torsional moment capacities in Modes 1, 2 and 3 of the section shown in Fig. 3(c), are computed in Table 6. The computed values of  $r$ ,  $R_2$ ,  $R_3$ ,  $K_1$  and  $K_2$  of the section are also listed in the table.

TABLE 6. Calculation of torsional moment capacities of the sections shown in Fig. 3(c).

| Example No. | $r$          | $K_1$        | $k_1$         | $T_1 = k_1 M_{01}$ | $R_2$        | $K_2$        |
|-------------|--------------|--------------|---------------|--------------------|--------------|--------------|
| (1)         | from Eq. (8) | from Eq. (4) | from Eq. (14) | (kN-m)             | from Eq. (6) | from Eq. (5) |
| (1)         | (2)          | (3)          | (4)           | (5)                | (6)          | (7)          |
| 1           | 0.08993      | 0.02518      | 0.0312        | 10.29              | 0.27070      | 0.05621      |
| 2           | 0.08295      | 0.02323      | 0.1805        | 106.45             | 0.27852      | 0.05184      |
| 3           | 0.08826      | 0.02592      | 0.1740        | 137.63             | 0.29925      | 0.05373      |
| 4           | 0.09665      | 0.02838      | 0.2822        | 166.10             | 0.33218      | 0.05883      |

Table 6 (contd)

| $k_2$<br>from Eq. (19) | $T_2 = k_2 M_{01}$<br>(kN-m) | $R_3$<br>from Eq. (7) | $k_3$<br>from Eq. (27) | $T_3 = k_3 M_{01}$<br>(kN-m) | $T_n$<br>(kN-m) | Expected<br>failure<br>mode |
|------------------------|------------------------------|-----------------------|------------------------|------------------------------|-----------------|-----------------------------|
| (8)                    | (9)                          | (10)                  | (11)                   | (12)                         | (13)            | (14)                        |
| 0.0338                 | 11.15                        | 0.10169               | -0.0040                | - 1.32                       | 10.29           | 1                           |
| 0.1518                 | 89.53                        | 0.06752               | 0.4714                 | 278.01                       | 89.53           | 2                           |
| 0.1790                 | 141.58                       | 0.05416               | 0.5928                 | 468.92                       | 137.63          | 1                           |
| 0.2236                 | 131.60                       | 0.21297               | 0.2154                 | 126.80                       | 126.78          | 3                           |

Table 6 shows that  $T_1$ ,  $T_2$  and  $T_3$  are 10.29, 11.15 and  $-1.32$  kN-m, respectively. The negative sign of  $T_3$  indicates that Mode 3 failure is not feasible. Thus, the theoretical torsional moment capacity  $T_n$ , is 10.29 kN-m and the failure will be in Mode 1.

### Example 2

Design a rectangular beam section if  $T_u = 63.75$  kN-m,  $M_u = 135.0$  kN-m and  $V_u = 212.5$  kN.

The estimated flexural moment capacity  $M'_{01}$ , is given in Table 2. A corresponding preliminary trial section is shown in Fig. 3(a). Various details of the section are presented in Tables 3 and 4. Since Mode 2 behavior is indicated, Eq. 16 is used to get  $K_2 = 0.03639$ . Thus, from Eq. 5 and 8,  $s = 128.2$ mm. A spacing of 120mm is, therefore, selected as shown in Fig. 3(b).

Table 5 shows the pure shear capacity  $V_{01}$  and  $\lambda_{01}$  of the section. Substituting the value of  $V_{01}$  in Eq. 35,  $\bar{V}_n = 164.9$  kN  $< V_u/\phi$ . Thus, as in Example 1, the pure shear capacity of the section is increased to  $250.0 + 1.6 T_u/\phi b = 592.9$  kN.

Substituting  $V_{01} = 592.9$  kN in Eq. 37, the required spacing for 12mm diameter stirrups  $s$ , is obtained as 94.6mm. Therefore, as shown in Fig. 3(c), a spacing of 90mm is selected.

Next, the torsional moment capacities in Modes 1, 2 and 3 of the section shown in Fig. 3(c), are computed and presented in Table 6. As can be seen, the theoretical torsional moment capacity of the section is 89.53 kN-m, and Mode 2 failure is predicted.

### Example 3

Design a rectangular section if  $T_u = 97.75$  kN-m,  $M_u = 324.0$  kN-m and  $V_u = 204.0$  kN.

Table 2 shows the design  $T/M$  ratio ( $= 0.32$ ) to be very close to the transitional  $\psi$  of the reference section as indicated by the closeness of the  $k_1$  and  $k_2$  values. This closeness, however, did not pose any special problem in the solution. Since  $k_1$  was slightly smaller, it was used in estimating  $M'_{01}$  and Mode 1 failure was assumed.

The section shown in Fig. 3(a) is proportioned with  $\alpha = 1.875$ . This indicates that the interaction data of the reference section presented in Table 1 can be conveniently used in the design of sections with different values of  $\alpha$ .

The pure shear capacity of the section shown in Fig. 3(b) is presented in Table 5. As in the case of Examples 1 and 2, the reduced shear capacity  $\bar{V}_n$ , was less than  $V_n/\phi$ . Accordingly, the shear capacity was increased. Calculations indicate that 14mm diameter stirrups at 110mm as shown in Fig. 3(c) would be adequate.

Table 6 gives the theoretical torsional moment capacity  $T_n$ , of the section shown in Fig. 3(c), as 137.63 kN-m.

#### Example 4

Design a rectangular beam section if  $T_u = 102.0$  kN-m,  $M_u = 27.0$  kN-m and  $V_u = 127.5$  kN.

The high value of  $\psi (= 4.0)$  in Table 2 indicates that Mode 3 failure may occur. However, as  $k_3$  values are not available, a section will be initially proportioned on the basis of the pure flexural moment  $M'_{01}$  estimated by using  $k_1$  or  $k_2$  value from Table 1. The section will then be checked for Mode 3 failure. Since Table 1 does not contain any value for  $\rho = 0.012$ , the required value of  $k_2$  is obtained by interpolation. The  $k_2$  and the estimated flexural moment  $M'_{01}$  are presented in Table 2. A section proportioned for  $M'_{01}$  are presented in Table 2. A section proportioned for  $M'_{01}$  is shown in Fig. 3(a) and its details are given in Table 3.

Design procedures similar to those used in the previous examples are then followed up to the checking of the shear capacity. The results of the various computations are presented in Tables 4 and 5. Figure 3(b) shows the section with stirrup spacing decided on the basis of Mode 2 behavior. The calculations starting with the checking of the shear capacity are presented here.

Substituting  $V_{01}$  from Table 5, in Eq. 35,  $\bar{V}_n = 178.2$  kN  $>$   $V_u/\phi (= 150.0$  kN). The shear capacity is, thus, adequate although  $\lambda_{01} > \lambda (= 0.20$ m). This is because, as indicated in Fig. 1(b), Eq. 35 does not control the shear capacity at high  $T/V$  ratios.

In view of the high  $T/M$  ratio, the torsional moment capacity in Mode 3 of the section shown in Fig. 3(b) is checked next. Substituting the values of  $K_1$ ,  $\Delta'$  and  $R_3$  in Eq. 27,  $k_3$  is obtained as 0.12871. Therefore,  $T_3 = k_3 M_{01} = 0.12871 \times 588.57 = 75.75$  kN-m  $<$   $T_u/\phi (= 120.0$  kN-m). The torsional moment capacity in Mode 3 is, therefore, to be increased at least to 120.0 kN-m. Setting  $T_3 = T_u/\phi$  in Eq. 34,  $R_3 = 0.21297$ .

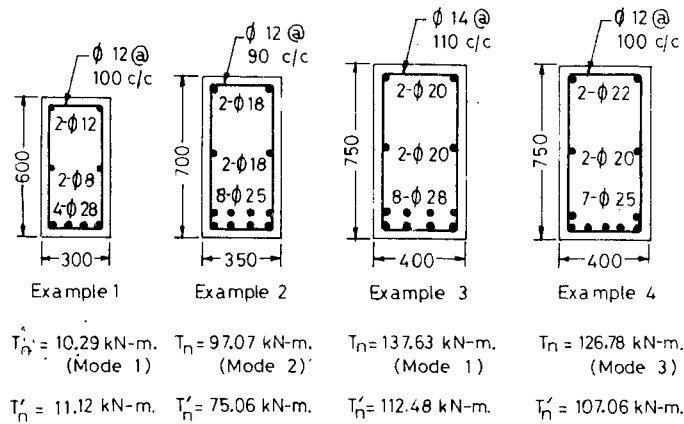
The required flexural moment capacity in negative bending is, thus,  $M_{03} = R_3 M_{01} = 0.21297 \times 588.57 = 125.35$  kN-m. The corresponding required  $\rho' = 0.0024$ . Therefore, the required steel area at the top,  $A'_s = \rho' b d_3 = 0.0024 \times 400 \times 692 = 665$ mm<sup>2</sup>. Two 22mm diameter bars having 760mm<sup>2</sup> area are provided as shown in Fig. 3(c).

The torsional moment capacities of this section in Modes 1, 2 and 3 are presented

in Table 6. As can be seen, the section has a nominal torsional moment capacity  $T_n$ , of 126.80 kN-m and a Mode 3 failure is indicated. It may be mentioned here that the top steel area can be increased further to enhance the capacity in Mode 3 and thereby eliminate the possibility of failure in this mode.

**Comparison with ACI Code Equations**

The sections designed in Examples 1, 2, 3 and 4 as shown in Fig. 3(c) were investigated by using the ACI code torsion equations for comparison purpose. It was found necessary to modify the designs slightly, to satisfy the code spacing requirements, by introducing longitudinal bars at middepth and also, in some cases, by changing the hanger size. The modified sections are shown in Fig. 4. The figure also shows the torsional moment capacities of the sections as obtained by using the ACI code torsion equations, as well as those given by the interactive strength equations, along with the corresponding failure modes. As can be seen, except at a very low value of  $T_u$ , *i.e.*, in Example 1, the torsional moment capacity is consistently underestimated by the ACI code equations.



$T'_n$  = Torsional strength as per ACI Code

Note: All dimensions are in millimeter

FIG. 4. Comparison with torsional strengths given by ACI code equations.

**Conclusions**

The interactive strength equations developed by Hasnat and Akhtaruzzaman<sup>[16]</sup> have been suitably adapted for the design of rectangular beams subjected to any combination of torsion, bending, and shear.



The design procedure basically consists of proportioning a section for a required pure flexural moment capacity. The section is then designed for torsion using the strength equations in their transformed forms.

The examples presented herein show that interaction data of a reference section are useful in estimating the required pure flexural moment capacity. The interaction data based only on Mode 1 and Mode 2 considerations are found satisfactory in most cases. However, when a possibility of Mode 3 failure exists due to high  $\psi$  and low  $\rho'$ , the design is to be checked and modified accordingly if required.

It is also necessary to modify the design when  $M/V$  ratio ( $\lambda$ ) is less than or around  $\lambda_{01}$  due to an overestimation of its shear strength by the basic strength equations.

Compared to the strength equations, the ACI code equations generally underestimate the torsional strength of beams subjected to torsion, bending and shear.

#### References

- [1] **ACI Committee 318.**, *Building Code Requirements for Reinforced Concrete*, ACI 318-63, American Concrete Institute, Detroit, Michigan, 115 p. (1963).
- [2] **ACI Committee 318.**, *Building Code Requirements for Reinforced Concrete*, ACI 318-71, American Concrete Institute, Detroit, Michigan, 78 p. (1971).
- [3] **Hsu, T.T.C.**, Ultimate Torque of Reinforced Rectangular Beams, *Journal of the Structural Division, American Society of Civil Engineers*, **94**(ST2): 485-510 (1968).
- [4] **Armstrong, S.**, The Strength of Concrete Members in Combined Bending and Torsion, *Symposium on Strength of Concrete Structures, London, Cement and Concrete Association*, pp. 101-122 (1956).
- [5] **Lessig, N.N.**, Determination of Load Carrying Capacity of Reinforced Concrete Element with Rectangular Cross-section Subjected to Flexure with Torsion, *Proceedings, Concrete and Reinforced Concrete Institute, Moscow*, pp. 5-28 (1959).
- [6] **Walsh, P.F., Collins, M.P. and Archer, F.E.**, The Flexure-Torsion and Shear-Torsion Interaction Behaviour of Rectangular Reinforced Concrete Beams, *Civil Engineering Transactions, The Institution of Engineers, Australia*, **CE9**: 313-320 (1967).
- [7] **Below, K.D., Rangan, B.V. and Hall, A.S.**, Theory for Concrete Beams in Torsion and Bending, *Journal of the Structural Division, American Society of Civil Engineers*, **101**(ST8): 1645-1660 (1975).
- [8] **Collins, M.P., Walsh, P.F., Archer, F.E. and Hall, A.S.**, Ultimate Strength of Reinforced Concrete Beams Subjected to Combined Torsion and Bending, in: *Torsion of Structural Concrete, (SP-18) ACI Special Publ. SP-18*, pp. 379-402 (1968).
- [9] **Collins, M.P.**, The Normal Moment Yield Criterion Applied to Beams in Flexure-Torsion, *Proceedings, International Conference on Shear, Torsion and Bond in Reinforced and Prestressed Concrete, Coimbatore, India*, pp. 216-225 (1969).
- [10] **Lampert, P. and Thurliman, B.**, *Torsion Tests of Reinforced Concrete Beams*, Bericht Nr. 6506-2, Institut für Baustatic, Zurich, Switzerland, 101 p. (1968).
- [11] **Rangan, B.V., Stanley, R.F. and Hall, A.S.**, Behaviour of Concrete Beams in Torsion and Bending, *Journal of the Structural Division, American Society of Civil Engineers*, **103**(ST4): 759-772 (1977).
- [12] **McMullen, A.E. and Warwaruk, J.**, Concrete Beams in Bending, Torsion and Shear, *Journal of the Structural Division, American Society of Civil Engineers*, **96**(ST5): 885-903 (1970).
- [13] **Mirza, M.S. and McCutcheon, J.P.**, Behaviour of Reinforced Concrete Beams under Combined Bending, Shear and Torsion, *Proceedings, American Concrete Institute Journal*, **66**(5): 421-427 (1969).
- [14] **Rajagopalan, K.S., Behera, U.K. and Ferguson, P.M.**, Total Interaction Method for Torsion Design, *Journal of the Structural Division, American Society of Civil Engineers*, **98**(ST9): 2097-2117 (1972).

- [15] Rausch, E., *Berechnung des Eisenbetons Gegen Verdrehung und Abscheren*, Ph.D. Thesis, Technische Hochschule, Berlin, 50 p. (1929).
- [16] Hasnat, A. and Akhtaruzzaman, A.A., Beams with Small Rectangular Opening under Torsion, Bending and Shear, *Journal of the Structural Division, American Society of Civil Engineers*, 113(10): 2253-2270 (1987).

### Notation

The following symbols are used in this paper :

|                          |   |  |
|--------------------------|---|--|
| $A_s, A_s'$              | = | area of bottom and top longitudinal steel, mm <sup>2</sup> ;                         |
| $A_w$                    | = | area of one leg of stirrup, mm <sup>2</sup> ;  |
| $b$                      | = | breadth of beam, mm;   |
| $d, d_2, d_3$            | = | effective depth in positive, lateral and negative bending, respectively, mm;         |
| $f_c^c$                  | = | cylinder compressive strength, MPa;  |
| $f_{wy}$                 | = | yield strength of web steel, MPa;  |
| $f_y$                    | = | yield strength of longitudinal steel, MPa;   |
| $h$                      | = | overall depth of beam, mm;   |
| $k_1, k_2, k_3$          | = | ratio between $T_1, T_2, T_3$ and $M_{01}$ ;   |
| $M$                      | = | bending moment, kN-m;  |
| $M_{01}, M_{02}, M_{03}$ | = | pure flexural strength in positive, lateral and negative bending respectively, kN-m; |
| $M'_{01}$                | = | estimated pure flexural strength in positive bending, kN-m;                          |
| $M_u$                    | = | factored bending moment, kN-m;   |
| $r$                      | = | $\frac{A_w f_{wy}}{s} \frac{0.9 x_1 y_1}{M_{01}}$                                    |
| $s$                      | = | spacing of stirrups, mm;   |
| $T$                      | = | torsional moment, kN-m;  |
| $T_1, T_2, T_3$          | = | torsional strength in Mode 1, Mode 2 and Mode 3 failure, respectively, kN-m;         |
| $T_n$                    | = | nominal torsional moment capacity, kN-m;   |
| $T_u$                    | = | factored torsional moment, kN-m;   |
| $V$                      | = | shear force, kN;   |
| $V_{01}$                 | = | pure shear capacity, kN;   |
| $V_c$                    | = | nominal shear strength provided by concrete, kN;                                     |
| $V_n$                    | = | nominal shear strength, kN;  |
| $\bar{V}_n$              | = | reduced nominal shear strength, kN;  |
| $V_s$                    | = | nominal shear strength provided by web reinforcement, kN;                            |
| $V_u$                    | = | factored shear force, kN;  |
| $x$                      | = | shorter overall dimension of rectangular cross-section, mm;                          |
| $x_1$                    | = | shorter center-to-center dimension of closed stirrup, mm;                            |
| $y$                      | = | longer overall dimension of rectangular cross-section, mm;                           |
| $y_1$                    | = | longer center-to-center dimension of closed stirrup, mm;                             |
| $\alpha$                 | = | $h/b$ ;  |
| $\Delta$                 | = | $1 + \mu/\psi\lambda$ ;  |
| $\Delta'$                | = | $\mu/\psi\lambda - 1$ ;  |
| $\delta$                 | = | $Vb/2T$ ;  |
| $\lambda$                | = | $M/V, m$ ;   |
| $\lambda_{01}$           | = | $M_{01}/V_{01}, m$ ;   |
| $\mu$                    | = | $(b^2 + bh)/(2b + 4h), mm$ ;   |
| $\rho$                   | = | $A_s/bd$ ;   |
| $\rho'$                  | = | $A_s'/bd$ ;  |
| $\rho_{max}$             | = | $0.75 \times$ balanced steel ratio;  |
| $\phi$                   | = | ACI code strength reduction factor; and  |
| $\psi$                   | = | $T/M$ .  |

## تصميم العتبات المستطيلة المقطع الخاضعة للّي والانحناء والقصر

علي أمجد أختر الزمان

قسم الهندسة المدنية ، كلية الهندسة ، جامعة الملك عبد العزيز

جدة ، المملكة العربية السعودية

يحتوي هذا البحث على تعديل لمجموعة من معادلات المقاومة ، يعتمد بعضها على بعض ، مبنية على نموذج الانحناء المتخالف ، بحيث تصبح مناسبة لتصميم العتبات ذات المقاطع المستطيلة الخاضعة للّي والانحناء والقصر . أما طريقة التصميم فهي طريقة التجربة والخطأ وهي مبنية على تقدير سعة عزم الانحناء الصافي اللازمة للمقطع المراد تصميمه . وقد استعمل لتقدير سعة عزم الانحناء الصافي ، معلومات التأثير المتبادل بين الّي والانحناء والقصر لمقطع مرجع . وقدمت هذه المعلومات في جدول وكذلك في مخططات تبادلية لا بعدية كما قدمت أربعة أمثلة عددية تغطي طرقاً مختلفة محتملة من الانهيار . ثم قورنت ساعات عزوم الّي للمقاطع المصممة بتلك التي نحصل عليها بتطبيق معادلات الّي المعطاة في قوانين الـ ACI .